

TISSUE PAPER WINTER TREES



In this art lesson, students will learn how to create a unique landscape of winter trees using mixed media technique. They will use their artwork to visually document a place they have been or seen pictures of and share it with others as they describe their artistic choices.

NATIONAL ART STANDARDS

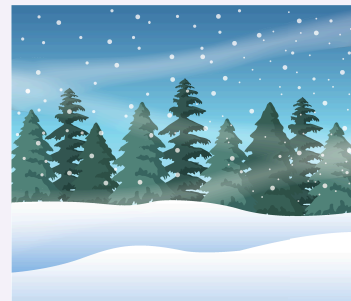
- VA:Cr.2.3.5a Identify, describe, and visually document places and/or objects of personal significance.
- VA:Re.7.1.5a Compare one's own interpretation of a work of art with the interpretation of others.

OBJECTIVES

- ✓ Students will be able to explore mixed media techniques in their artwork.
- ✓ Students will be able to compare individual interpretations of art.

MATERIALS

- ☐ Tissue paper in different colors
- ☐ Watercolor paper
- ☐ Watercolors
- ☐ Cup of water
- ☐ Glue stick
- ☐ Hole punch
- ☐ Markers
- ☐ Scissors
- ☐ Pictures of winter landscapes with coniferous trees
- ☐ Drawing paper



TISSUE PAPER WINTER TREES



ACTIVITY

- Invite students to share their memories of a tree-filled winter landscape they have visited or seen with the group.
- Share the sample winter landscape images with students and encourage them to identify elements that stand out to them.
- Guide students with the following questions:
 - What elements in the images stand out to you?
 - How do they convey the season of the year?
 - Do they inspire any particular emotions? If so, why?
- Point out that each student may see the images differently since art interpretation can be subjective.
 - Define subjective as based on personal influences, opinions, and tastes.
- Inform students that they will create their own winter tree landscape representing a location they have seen or visited.
- Provide each student with a piece of watercolor paper, watercolors, a paintbrush, and a cup of water.
- Have students paint a blue watercolor background that fades to white at the bottom and allow it to dry.
- Share tissue paper in various colors with students and allow them to choose their favorite and cut it into squares of various sizes.
- Take a piece of cardstock, and use a glue stick to adhere the tissue paper squares to the paper covering the surface before allowing to dry.
- Provide pencils and ask students to draw geometric-shaped trees on the back of the paper.
- Cut out the geometric tree shapes before pasting them down on the watercolor background, arranging them to mimic a forest.
- Use a hole punch and white paper to create small dots which can be pasted across the blue sky and tree shapes to represent falling snow.
- Invite students to use a marker to create grass and other details at the base of the trees.
- Ask students to share their work with others and discuss the thinking behind their artistic choices.

