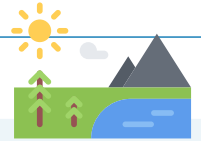




Landforms come in all shapes and sizes. Students can see examples of landforms in their backyard and learn about a greater variety when viewing pictures from around the world. In this learning plan, students will also learn about erosion and the process of the earth's surface changing shape slowly over time.



STANDARDS

2-ESS2-1: Things may change slowly or rapidly.

2-ESS2-2: Develop a model to represent the shapes and kinds of land and bodies of water in an area.

2-ESS2-3: Water is found in the ocean, rivers, lakes, and ponds.

OBJECTIVES

- ✓ Students will be able to name landforms and bodies of water.
- ✓ Students will be able to describe how landforms change over time.

GUIDING QUESTIONS

What do you call this type of landform?

Which body of water is this?

How do water and wind change the shape of land?

How can different landforms change over time?

MATERIALS

- Landform or Body of Water? worksheet
- Landform Puzzles worksheet
- Landform Trading Cards worksheet
- Build a Landform worksheet
- Landform Book worksheets
- Scissors
- Playdough
- Nonfiction picture books about landforms, bodies of water, and erosion (optional)
- 2 Liter bottle or bucket, sand/soil, water (optional)

**ASSESSMENTS**

Formative assessments and checks for understanding occur throughout the lesson:

- Students' responses to guiding questions
- Students' ability to name landforms and bodies of water
- Students' ability to define erosion and weathering and describe the effects of each on earth's surface
- Students' work on practice worksheets

**Summative Assessment:
Landform Book**

**DIFFERENTIATION
STRATEGIES**

- Whenever possible, show students pictures, video clips, and real-life examples of different landforms. You may even find a 360 degree camera online to show different mountains, valleys, and ocean scapes.
- To aid students in Activity 2, before cutting apart the puzzle pieces, review each term and definition with the class. Then, begin the practice activity of matching the pieces.

EXTENSION ACTIVITIES

- During Activity 2, challenge students to draw pictures of the eight puzzle pieces that have only a definition, and encourage them to add a description or real-life example of the puzzle pieces with pictures. For example, they might write "Rocky Mountains" as an example for the mountain puzzle piece.
- Perform a simple experiment to show the process of erosion. Fill a plastic 2-liter bottle or recyclable bucket with soil or sand. Begin pouring water at one end and show how it moves the sediments. Repeat the process a few times by pouring water in different locations. Ask students to observe and share what they see happening.



ACTIVITY OVERVIEW

Activity 1

Landform or Body of Water?

Students sort words into two categories and draw a picture of each.

Activity 2

Landform Puzzles

Students match landform puzzle pieces to their picture or definition.

Activity 3

Landform Trading Cards

Students design trading cards for six landforms of their choice.

Activity 4

Build a Landform

Students build a landform out of playdough and share its attributes.

Activity 5

Landform Book

Students read, illustrate, and write about landforms in a mini book.

ACTIVITY 1: LANDFORM OR BODY OF WATER?

- Give students a blank piece of paper. Ask them to draw a picture of the earth. They will likely draw a picture of the planet.
- Then, have them turn it over and tell them, "Now let's zoom in to the land on earth. Draw a picture of land or water that you might see on the planet. Try to draw only the land or water - not houses, people, or animals."
- Display the students' artwork and invite the class to walk around and make a list of things they see. For example, they may see a mountain, a field, a river, or the ocean.
- Come back together and teach the class how the earth's surface is covered in distinct landforms and bodies of water. In this learning plan, they will explore both types of features.
- Give students a Landform or Body of Water worksheet. They will sort the words into the two categories landform and body of water. Show them how to check off each word as they go. Then, they can draw a picture of one landform and one body of water.
- Close the lesson by having students share what makes each of their pictures special. This will help them define the landform and body of water they chose. For example, they may have drawn a valley. They can describe that a valley is a deep portion of land that comes in between hills or mountains.
- Allow each student to share their work.



ACTIVITY 2: LANDFORM PUZZLES

- This activity may introduce students to some new landform names or reinforce what they have already learned.
- Begin by cutting apart the puzzle pieces.
- Discuss reasons the earth's surface takes different shapes. Tell the students about erosion by saying, "Erosion is the process where earth's surface is worn down by wind and water. It can take a really long time to wear it down enough to change its shape." You may consider showing a picture of the Grand Canyon.
- Then, have students match each landform puzzle piece to its picture or definition. Highlight landforms that are caused by erosion.
- You can turn this into a memory game if you would like to flip over the landform names on one half of the table and the definitions and pictures on the other.
- Students can take turns revealing a puzzle piece and trying to find its match.

ACTIVITY 3: LANDFORM TRADING CARDS

- In this activity, students will create trading cards to show different landforms and bodies of water.
- They can cut apart and design six cards. Invite them to choose landforms or bodies of water from the list provided.
- When they finish, challenge them to research an example of each landform on earth. They can use a computer or nonfiction books to find examples of the landforms and write them on the back of their trading cards.
- For extra fun, have students trade their cards with peers and collect a variety of landforms!



ACTIVITY 4: BUILD A LANDFORM

- This activity encourages students to build landforms using playdough or clay.
- Give each student a Build a Landform worksheet and some playdough.
- Allow them to explore with the playdough and build a shape of something that could be found on land. For example, they may build a volcano.
- Then, they can check the boxes that describe their landform. You may want to review these options first before students begin building.
- Finally, students will draw a picture of their creation on the worksheet so they can show a family member what they created after they have put their playdough away.

ACTIVITY 5: LANDFORM BOOK

- To finish this learning plan, students will make a miniature book about landforms.
- Give each student copies of the Landform Book worksheets.
- They can cut apart the pages and compile into a mini-book using a stapler.
- Students will draw illustrations to match the sentences on each page. They can also add their own text to the final page stating their opinion about a landform.
- Invite the students to read the book to a family member or friend in class.



NAME _____

DATE _____

LANDFORM OR BODY OF WATER?

Directions: Sort the words into the categories below. Then, draw a picture of one landform and one body of water.

Word Bank:

- | | | | | |
|---------------------------------|-----------------------------------|---------------------------------|------------------------------------|------------------------------------|
| <input type="checkbox"/> bay | <input type="checkbox"/> volcano | <input type="checkbox"/> desert | <input type="checkbox"/> valley | <input type="checkbox"/> river |
| <input type="checkbox"/> ocean | <input type="checkbox"/> canyon | <input type="checkbox"/> hill | <input type="checkbox"/> plateau | <input type="checkbox"/> waterfall |
| <input type="checkbox"/> island | <input type="checkbox"/> mountain | <input type="checkbox"/> lake | <input type="checkbox"/> peninsula | <input type="checkbox"/> plain |

Landform	Body of Water
Word Sort:	Word Sort:
Draw a picture of one landform:	Draw a picture of one body of water:

LANDFORM PUZZLES

Directions: Cut apart the puzzle pieces. Then, have students match each landform to its picture or definition.

Bay

A body of water that is connected to an ocean or sea.

Volcano



Canyon

A deep narrow valley with steep sides that has been formed from erosion.

Waterfall



Peninsula

A piece of land almost entirely surrounded by water.

River



Delta





A deposit of sediments formed at the end of a river.

Island



LANDFORM PUZZLES

Directions: Cut apart the puzzle pieces. Then, have students match each landform to its picture or definition.

Desert	A barren area of land that receives very little rain.	Ocean	
Glacier	A large piece of ice that moves across land.	Mountain	
Valley	A low area of land between mountains or hills.	Lake	
Isthmus	A narrow strip of land with water on each side.	Plain	

NAME _____

DATE _____

LANDFORM TRADING CARDS

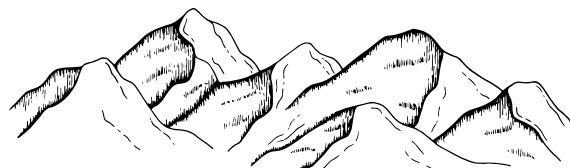
Directions: Cut apart and design trading cards to show different landforms and bodies of water. Choose six from the list below.

- Choose 6:
- | | | | | |
|---------------------------------|-----------------------------------|---------------------------------|------------------------------------|------------------------------------|
| <input type="checkbox"/> bay | <input type="checkbox"/> volcano | <input type="checkbox"/> desert | <input type="checkbox"/> valley | <input type="checkbox"/> river |
| <input type="checkbox"/> ocean | <input type="checkbox"/> canyon | <input type="checkbox"/> hill | <input type="checkbox"/> plateau | <input type="checkbox"/> waterfall |
| <input type="checkbox"/> island | <input type="checkbox"/> mountain | <input type="checkbox"/> lake | <input type="checkbox"/> peninsula | <input type="checkbox"/> plain |



Landform:
Describe It!
Draw It!

Landform:
Describe It!
Draw It!





LANDFORM TRADING CARDS

Landform:

Describe It!

Draw It!

Landform:

Describe It!

Draw It!

Landform:

Describe It!

Draw It!

Landform:

Describe It!

Draw It!

NAME _____

DATE _____



BUILD A LANDFORM

Directions: Make a landform using playdough. Check the boxes that describe your landform. Then, draw a picture of your creation below.

Check: My landform has...

slopes

pointed tops

hollow space

opening on top

river running through

water on sides

flat top

flat land

rocky ridges

Circle: My landform was created by...

erosion

deposition

weathering

earth's plates colliding

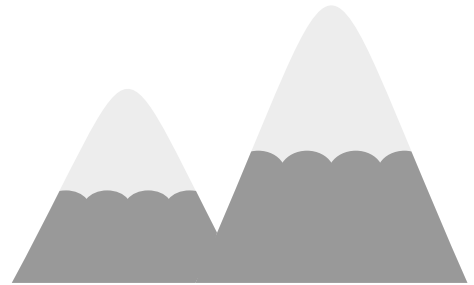
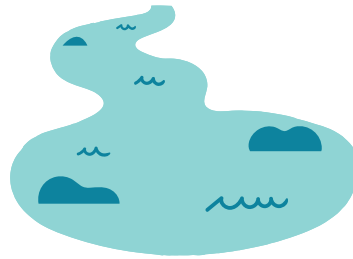
My landform:



LANDFORM BOOK

Directions: Draw illustrations to match the sentences on each page in the book.

Landforms



Name: _____

1

Earth's surface is covered with different features called landforms.

A mountain is formed when tectonic plates collide and the earth is pushed upward.

2

LANDFORM BOOK

Directions: Draw illustrations to match the sentences on each page in the book.

A beach is formed by deposition when waves bring sand and rocks to land.

3

Earth also has bodies of water like rivers, lakes, bays, and oceans.

4

LANDFORM BOOK - WRITE YOUR OWN

Directions: Draw illustrations to match the sentence below and then complete the sentence on the last page.



A large rectangular box with a solid black border, intended for drawing an illustration.

A waterfall forms when water erodes softer rock underneath a river.

5



A large rectangular box with a solid black border, intended for drawing an illustration.

One of my favorite landforms is _____

because _____

6

